

From HPLC via preparative LC up to the dissolution test: Flow measuring cells of J&M are worldwide in use.

The new RVP flow through measuring cell can fast and reliably be adapted to changing operating conditions. The optical path length is pre-eligible from 0.5 mm to 10 mm and can be reproduced with a precision of 1%.

Whether the liquid flow is docked by Swagelok - or by TC - units become decided by the user.

The unique, robust design and the consistent material selection permit most various use variants: online or in the by-pass, from cleaning validation in the pharmaceutical production via quality control in the food industry up to process monitoring e.g. at the papermaking.

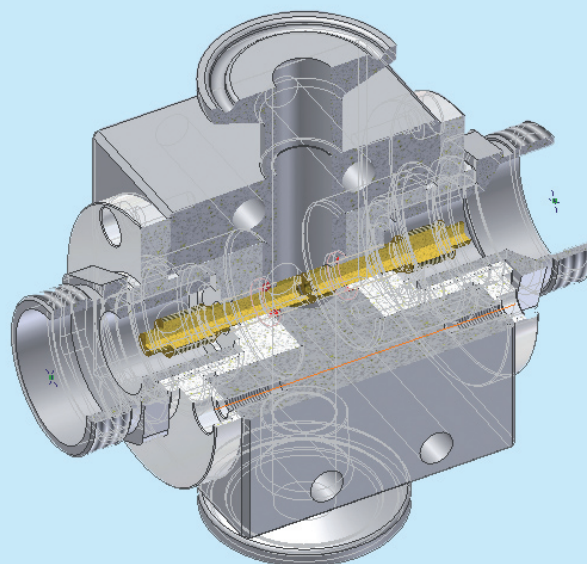


Fig.1: Online installation for cleaning validation in a pharmaceutical plant.

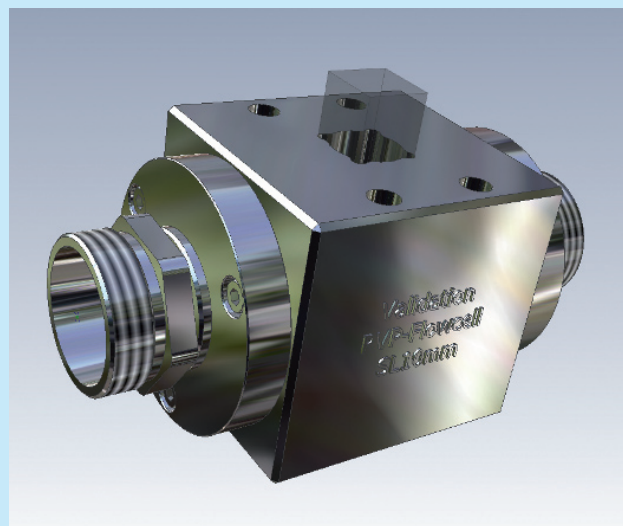


Fig.2: Validation block for reference cuvette for system validation.

The extremely low dead volume of the RVP flow through measuring cell permits an effortless cleaning and the accompanying validation block makes the calibration or validation possible at the place of the installation.

Fields of application

Process control and prompting in the chemical, pharmaceutical, food-, semi-luxury goods and feeding stuff industry, at the papermaking, in the environmental monitoring, in biotechnological research, production plants and many more.

RVP Flow through measuring cell - technical specifications



Specifications RVP:

Optical Data	
- Spectral range	190 nm - 2200 nm
- optical path length	0,5 - 10 mm (customer specific), others on request
- Reproducibility of optical path length	± 1%
- Spot Diameter	2,5 mm
- Optical window	Saphir glas
Flow through data	
- Total cell volume	4,8 ml
- Cell volume at spot	2,5 - 59 µl (customer specific)
- Death volume	negligible
- Flow through	n.a. *
- Pressure	Up to 15 bar
Connections	
- Light guiding fibres	SMA / SMA (customer specific)
- Sample connection	Swagelok, TC (customer specific)
- Protective sheathing	Possible (customer specific)
General details	
- Dimensions	85,8 x 91,9 up to 121,8 x 100,3 mm (customer specific)
- Weight	ca. 1300 g (customer specific)
- Case	SS 316L
- Sealing	Kalrez ®
- Working Temperature	5 - 140°C
- Accessories	Calibration set, protective sheathing
- Price	On request

Note

Due to technological progress all specifications can be changed without a further note.